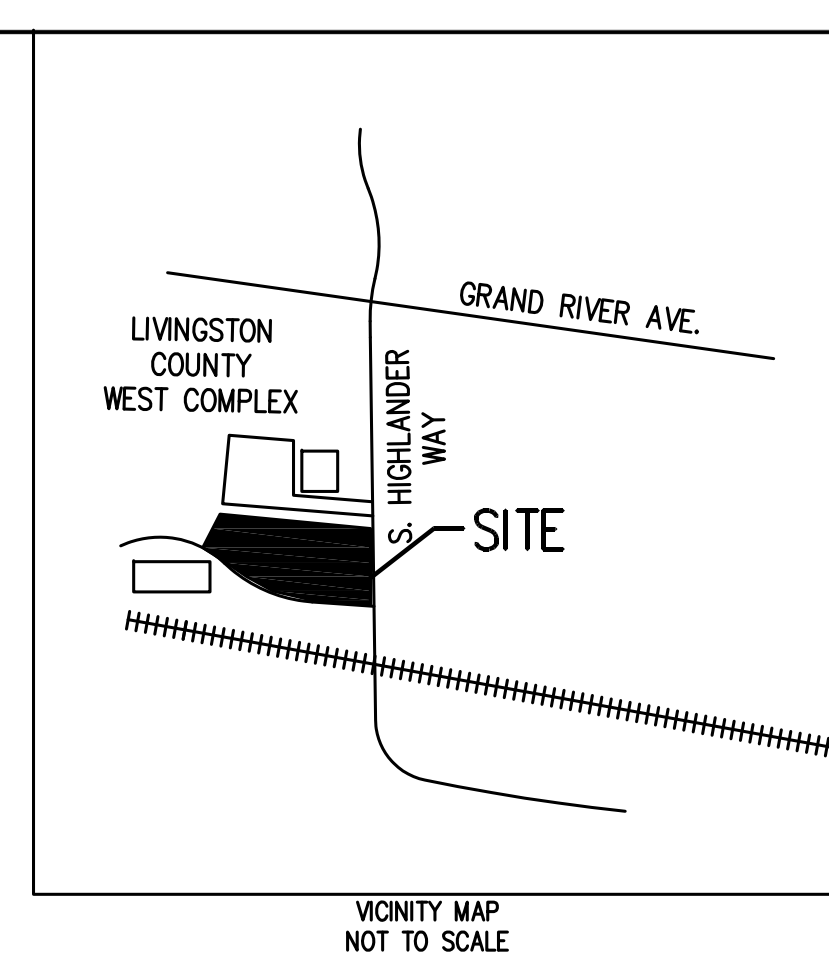
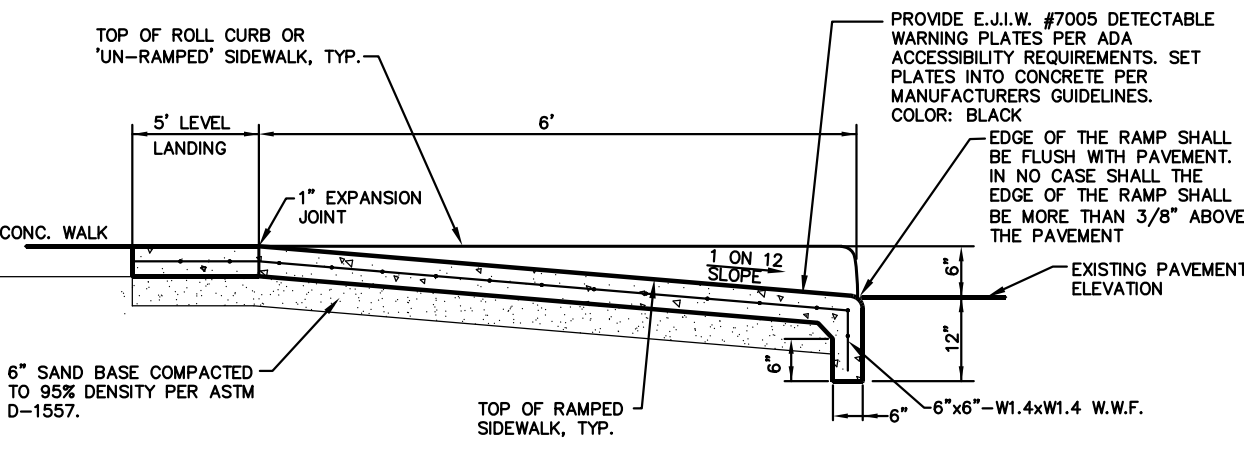
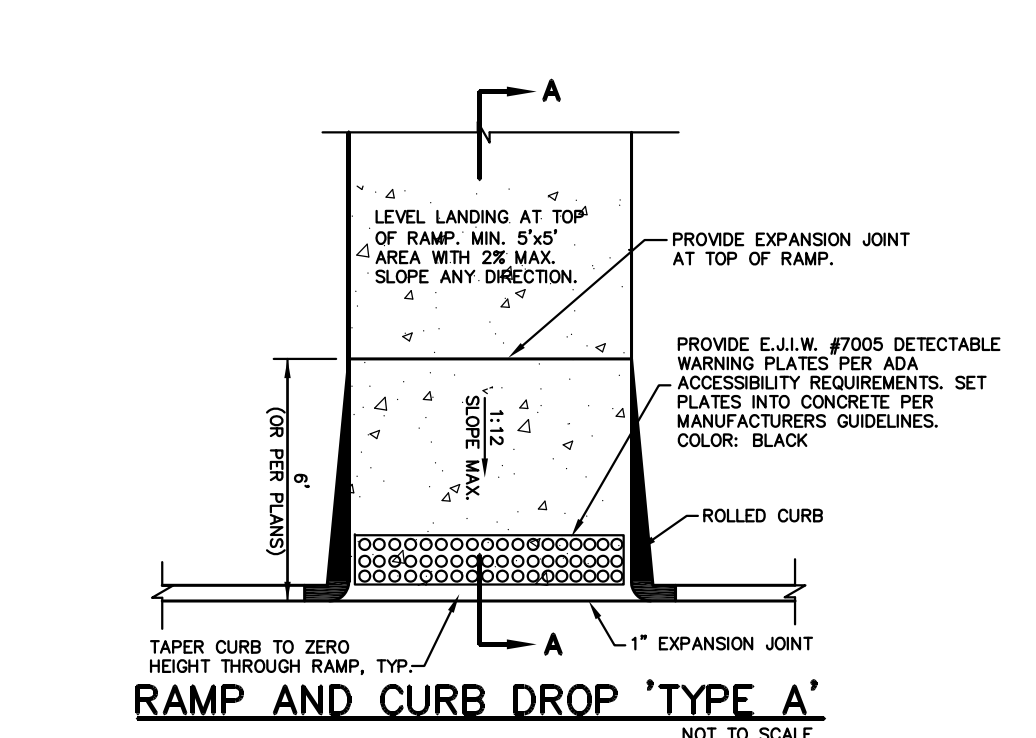


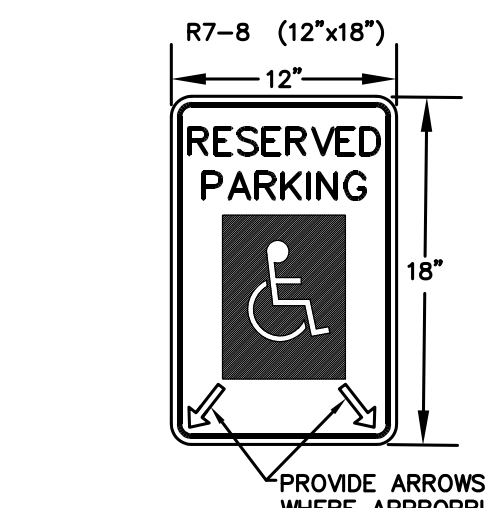
DETECTABLE WARNING SURFACE:
ALL ACCESSIBLE CONCRETE RAMPS ARE TO HAVE A DETECTABLE WARNING SURFACE THAT HAS A CONTRASTING COLOR AND TEXTURE PER A.D.A. ACCESSIBILITY GUIDELINES SECTION 4.29. PROVIDE E.J.I.W. #7005 DETECTABLE WARNING PLATES PER ADA ACCESSIBILITY REQUIREMENTS. SET PLATES INTO CONCRETE PER MANUFACTURERS GUIDELINES. REFER TO INDIVIDUAL RAMP DETAILS FOR ADDITIONAL INFORMATION. VERIFY REQUIREMENTS WITH LOCAL AGENCY.



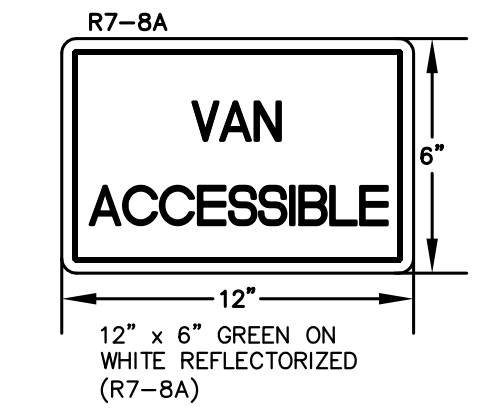
SECTION "A-A" THRU RAMP DETAIL (TYP)
NOT TO SCALE



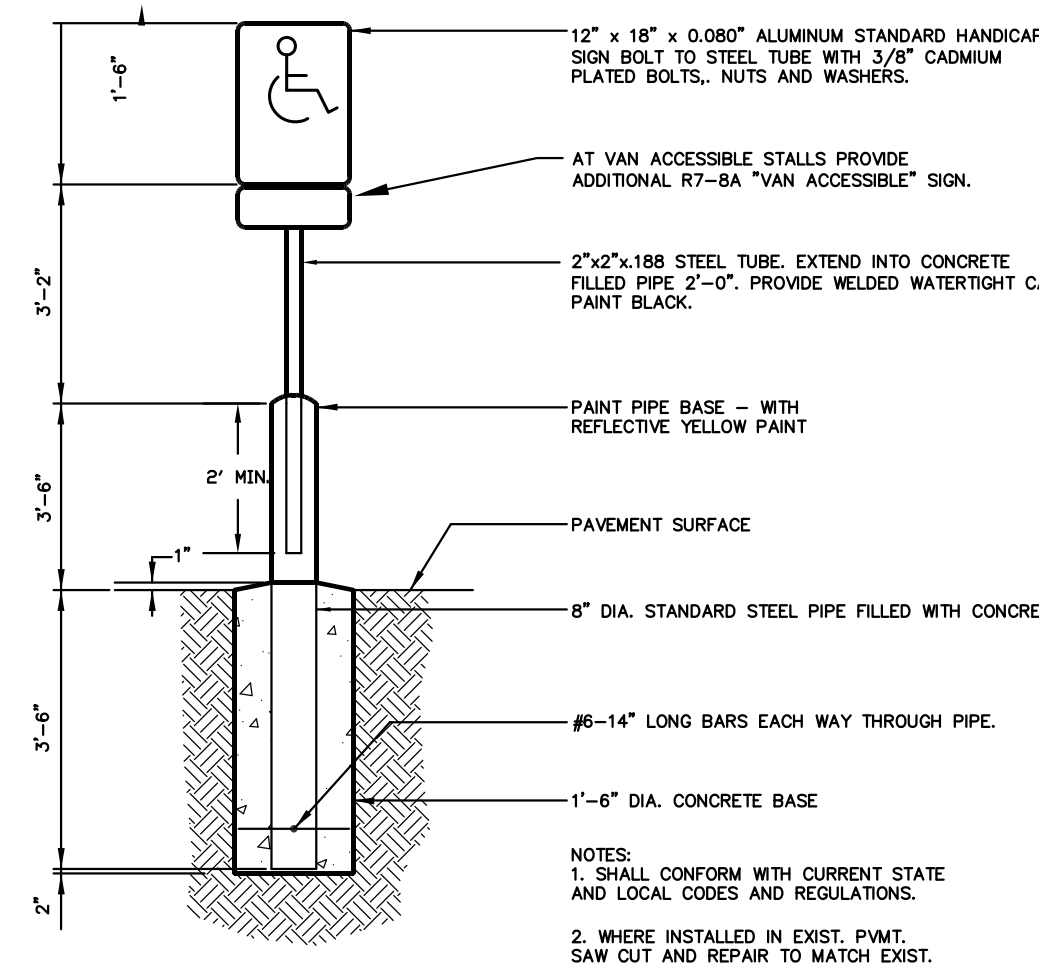
NOTES:
1. ALL MATERIALS AND CONSTRUCTION SHALL CONFORM TO CURRENT CITY OF HOWELL STANDARDS AND SPECIFICATIONS.



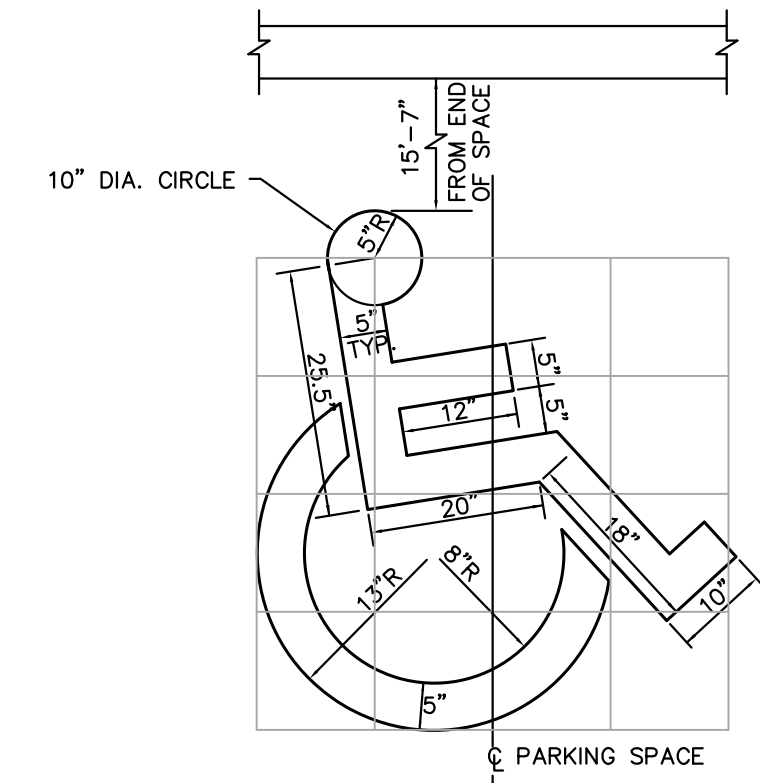
HANDICAP SIGN DETAIL
NOT TO SCALE



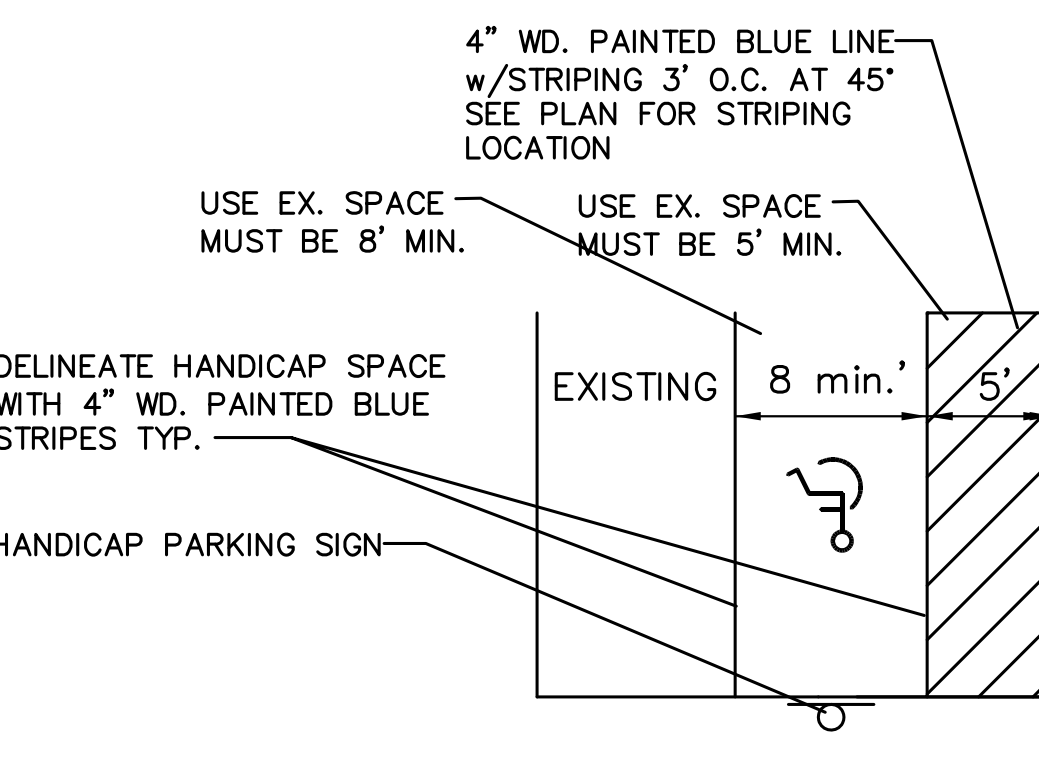
VAN ACCESSIBLE SIGN
NOT TO SCALE



SIGN AND POST INSTALLATION IN PAVED AREAS
NOT TO SCALE



"BARRIER FREE" PARKING SPACE SYMBOL
NOT TO SCALE



HANDICAP SPACE AND TYPICAL ISLAND DETAIL
NOT TO SCALE

NO.	REV.	CHK.	DESCRIPTION	DATE

CAUTION!
THE LOCATION AND ELEVATIONS OF EXISTING UNDERGROUND UTILITIES AS SHOWN ON THIS DRAWING ARE ONLY APPROXIMATE. NO GUARANTEE IS EITHER EXPRESSED OR IMPLIED AS TO THE COMPLETENESS OR ACCURACY THEREOF. THE CONTRACTOR SHALL BE EXCLUSIVELY RESPONSIBLE FOR DETERMINING THE EXACT UTILITY LOCATIONS AND ELEVATIONS PRIOR TO THE START OF CONSTRUCTION.

THIS DRAWING AND DESIGN ARE THE PROPERTY OF PROFESSIONAL ENGINEERING ASSOCIATES, INC. THEY ARE SUBMITTED TO THE CONTRACTOR FOR THEIR REVIEW NOT TO BE USED, REPRODUCED, OR COPIED IN ANY MANNER WITHOUT THE WRITTEN PERMISSION OF PROFESSIONAL ENGINEERING ASSOCIATES, INC. ALL COMMON LAW RIGHTS OF COPYRIGHT AND OTHER RIGHTS ARE HEREBY SPECIFICALLY RESERVED. © 2013 PROFESSIONAL ENGINEERING ASSOCIATES, INC.

CONSTRUCTION CONTRACTOR AGREES THAT IN ACCORDANCE WITH GENERALLY ACCEPTED CONSTRUCTION PRACTICES, CONSTRUCTION CONTRACTOR SHALL BE RESPONSIBLE FOR OBTAINING SOLE AND COMPLETE RESPONSIBILITY FOR JOB SET CONDITIONS DURING THE COURSE OF CONSTRUCTION OF THE PROJECT, INCLUDING SAFETY OF ALL PERSONS AND PROPERTY THAT THE REQUIREMENT SHALL BE MADE BY ANY CONTRACTOR AND NOT BE LIMITED TO NORMAL WORKING HOURS, AND CONSTRUCTION CONTRACTOR FURTHER AGREES TO DEFEND, INDEMNIFY AND HOLD DESIGN PROFESSIONAL LIABILITY FROM ANY AND ALL LIABILITY, REAL OR ALLEGED, IN CONNECTION WITH THE PERFORMANCE OF WORK ON THIS PROJECT EXCEPT LIABILITY ARISING FROM THE SOLE NEGLIGENCE OF THE DESIGN PROFESSIONAL.

3 FULL WORKING DAYS BEFORE YOU DIG CALL

811

Know what's Below
Call before you dig

MISS DIG System, Inc.
1-800-482-7171 www.missdig.net

PROFESSIONAL ENGINEERING ASSOCIATES
2900 E. Grand River Ave.
Howell, MI 48843
Phone: (517) 517-546-8583
Fax: (517) 546-8973
website: www.peainc.com

HOWELL AREA PARKS & REC. AUTHORITY
925 W. GRAND RIVER AVENUE
HOWELL, MICHIGAN

SITE PLAN
HOWELL DOG PARK
2.4 ACRES, LIVINGSTON COUNTY WEST COMPLEX
CITY OF HOWELL, LIVINGSTON COUNTY, MICHIGAN

DES. JTS DN. RMS SUR. N/A P.M. JTS

ORIGINAL
ISSUE DATE: SEPT. 6, 2013
PEA JOB NO. 2013-165
SCALE: 1" = 30'
DRAWING NUMBER:
P-1